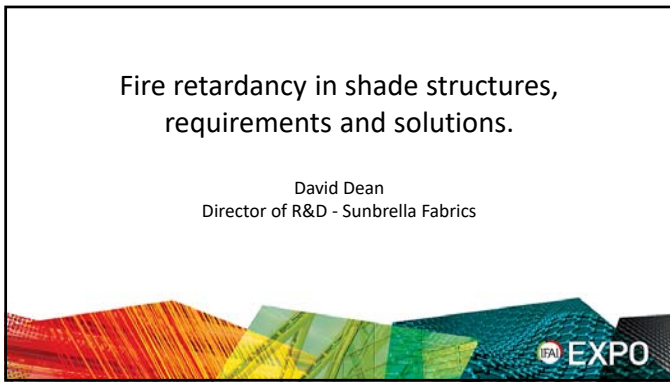
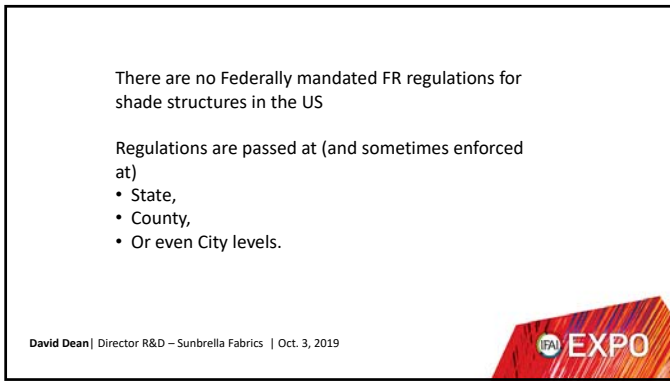




1



2



3

Why are FR regs proliferating?

- According to PAMA (in 2016) - There has never been a fire where the ignition point has been an awning.
- However there have been a number of high profile fires where the building itself or accessories to it have been major factors.
- Grenfell Tower in London – Aluminium and Foam Cladding.
- Cosmopolitan Casino in Las Vegas – Fake palm trees and cabana Curtains.

David Dean | Director R&D – Sunbrella Fabrics | Oct. 3, 2019



4



5

When should you worry about *possible* FR regulations?

- Anything non residential.
- Particularly Schools,
- 'Meeting places',
- Hotels,
- Restaurants etc.

David Dean | Director R&D – Sunbrella Fabrics | Oct. 3, 2019




6

What are the possible Regs you might have to worry about?

- ASTM E84 – Flame Spread index
- NFPA 701:01 & 02,
- California Title 19 (Div1, Ch8),
- CPAI 84,
- IMO,
- CN, BS, M & B.

David Dean | Director R&D – Sunbrella Fabrics | Oct. 3, 2019




7

Who do you speak to in order to find out the rules?

- Local Fire Marshal, Permitting Office or Fire Department
- Manufacturer or Distributor,
- Specifier or Architect,
- Internet - Caution,
- Customer – Extreme Caution,

David Dean | Director R&D – Sunbrella Fabrics | Oct. 3, 2019



8

What are your options?

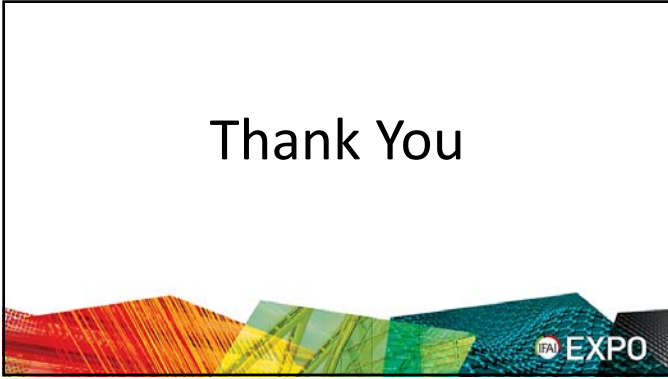
Use FR fabrics with the relevant certifications,

- Fabrics with Inherently FR Polymers
- Fabrics manufactured with a FR coating
- Post treated Fabrics – Caution with regards to manufacturers warranty

David Dean | Director R&D – Sunbrella Fabrics | Oct. 3, 2019



9



10



11
