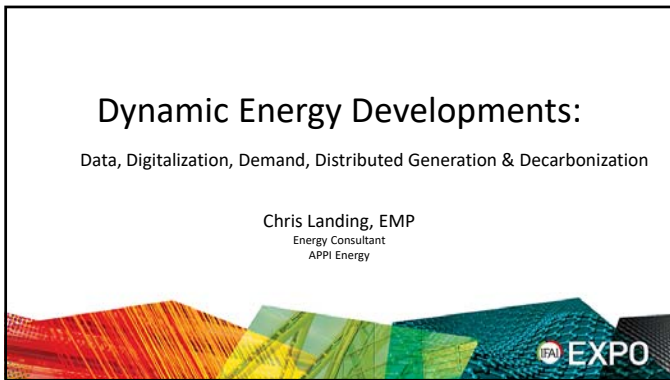
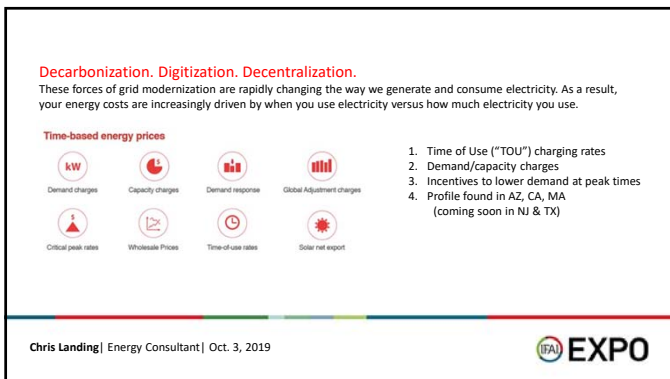




1



2



3

Understanding Demand

Minimizing when possible is critical to cost reduction

- Demand is not usage of kWh
 - Demand "kW" is the peak consumption of kWh (how much and when do I consume the most kWh)
- Peak Demand
 - Management programs can be implemented by most customers no matter the usage profile, location and operations.
- Peak Shaving
 - During periods of highest electricity on the grid is rewarded with payments from utilities and "capacity tag" reductions that help decrease electricity supply costs with competitive suppliers if the location is in a deregulated supply market.

Chris Landing | Energy Consultant | Oct. 3, 2019 IFAI EXPO

4

Chris Landing | Energy Consultant | Oct. 3, 2019 IFAI EXPO

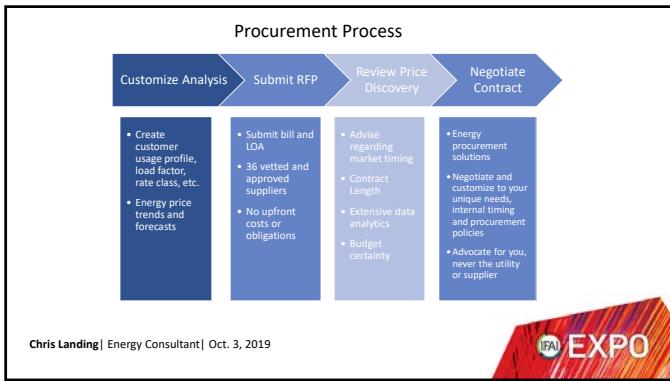
5

Artificial Intelligence (AI) Battery Storage

- Technology Solutions
 - Combines AI that continually monitors and learns about usage
 - Automatically sends signals to battery to "kick-on" during periods of high or peak demand
 - Reduces consumption of utility supply at times when costs are highest
 - Load is switched back to utility supply based on decreasing cost structures
 - Battery recharges at night when utility supply costs are lowest
 - Battery costs are lower now
 - Highly advanced software is affordable and proven

Chris Landing | Energy Consultant | Oct. 3, 2019 IFAI EXPO

6



7

Sample Pennsylvania Electricity Price Discovery

Date: April 1, 2019 Contract Start: February 2020

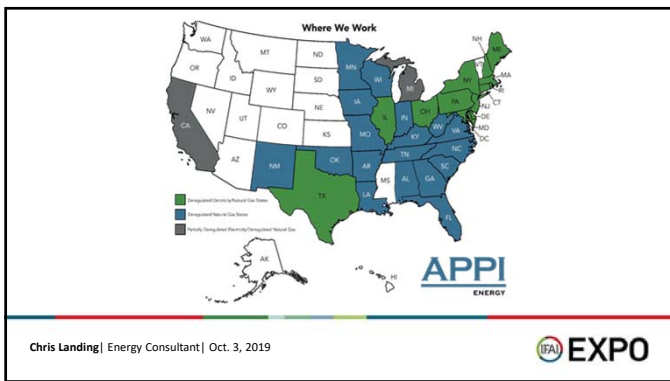
Company	12 Months	24 Months	36 Months	48 Months	Notes
AP ENERGY	\$0.06450	\$0.06627	\$0.06731	\$0.06799	Single billing 100% billing
Constellation	\$0.07154	\$0.07378	\$0.07489		Single billing 100% billing
Direct Energy	\$0.07172	\$0.07309			Single billing 100% billing
Energycent	\$0.06740	\$0.06875	\$0.06884		Single billing 100% billing
Hudson Energy	\$0.06770	\$0.06930	\$0.07110	\$0.07260	Single billing 100% billing
Liberty Energy	\$0.06455	\$0.06567	\$0.06631		Single billing 100% billing Contract price will include G&T
SPC	\$0.06677	\$0.06636	\$0.06938	\$0.06999	Single billing 100% billing Material to-risk Change language
SPC	\$0.06754	\$0.06914	\$0.07046		Single billing 100% billing Contract price will include G&T
SPC	\$0.06806	\$0.06991	\$0.07124		Single billing 100% billing

Final price includes all of interest cost components of current trade and rates. Prices shown for PA service accounts do not include Gross Receipts Tax (GRT) for comparison, but some suppliers include GRT in their contract price. Prices are indicative and subject to change prior to final acceptance. Credit approval is necessary. To execute a supplier offer.

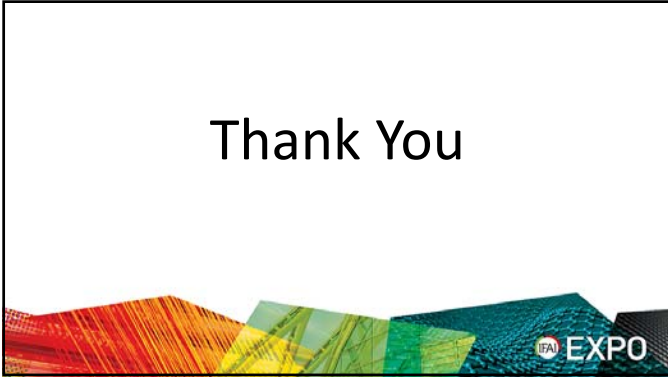
Account/Market/Unit: 1000 Rate Class: Service Account #
 PA Electric 10000 001 00000000
 PA Electric 10000 003 00000000

Chris Landing | Energy Consultant | Oct. 3, 2019

8



9



10



11
